

CHiQ

androidtv

Hey Google

B8U

4K Laser UST Projector



2300ANSI LM*

MEMC Technology

Dolby Audio

Dolby Vision

DTS HD

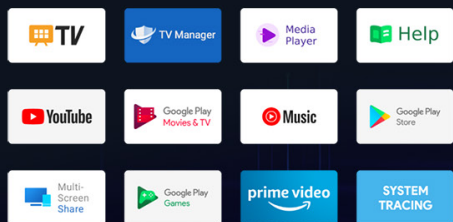
Google Play

5000+ Apps

Chromecast
built-in

androidtv

Powered by the Android TV™ OS, from YouTube to Prime Video, there are tons of apps for your selection.



Chromecast

The Built-in Chromecast allows you to cast your favourite shows, movies, music and more to the giant screen in one click.

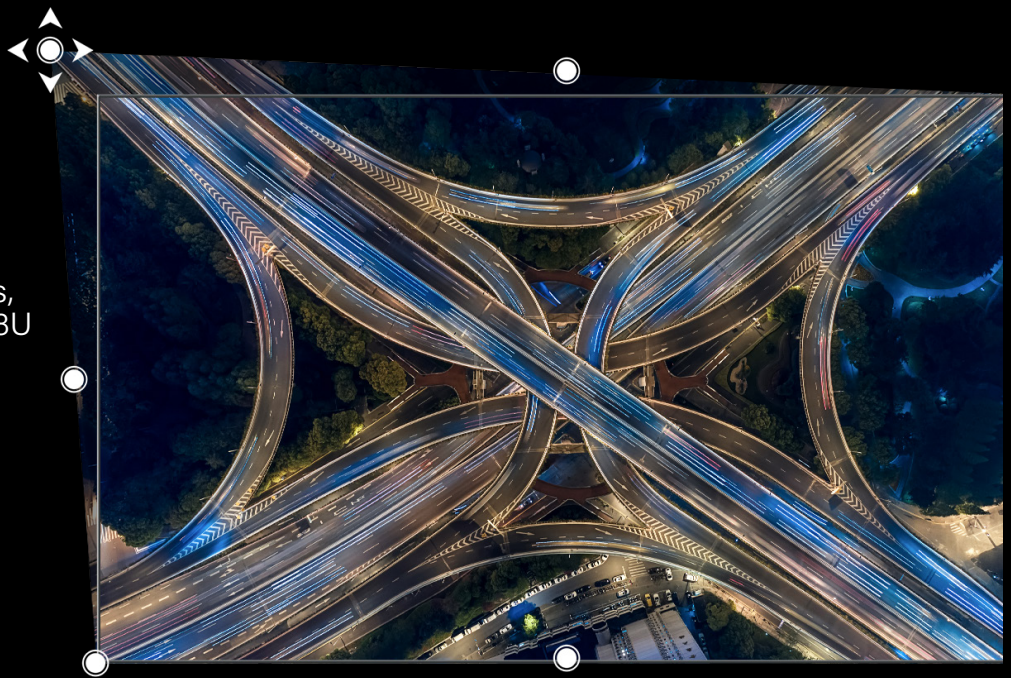


Hey Google

Simply say "Hey Google" to call or search for apps, movies, or ask about the weather – all without leaving what you're watching.

8 POINTS KEYSTONE

With up to 8 adjustment points, the keystone adjustment on B8U is easy and precise.



190MM FOR 100"

With the 0.21:1 ultra-short throw ratio, a giant 100" projection only requires a distance of 190mm between the edge of the projector and the screen.

It frees up your space and makes it flexible on installation.



EYE HEALTH AND SAFETY

99% Blue Light Emission Free Reflected Light
Larger Screen
Wide-Angle Eye Protection Sensor

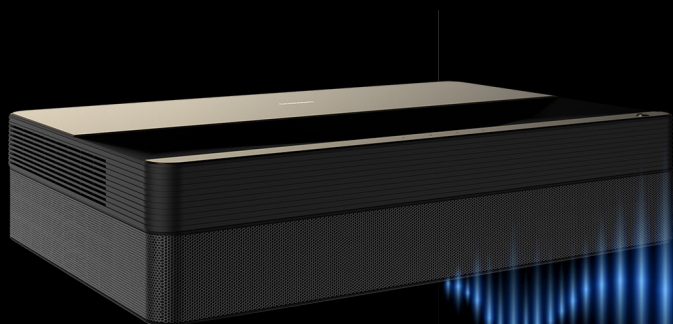


GIANT 4K IMAGE

4K UHD | 2300 ANSI LUMENS

B8U offers 2300ANSI lumens brightness to deliver a conformable viewing experience.

3840*2160 UHD resolution reveals every fine detail on a giant screen.



DTS-HD MASTER AUDIO

DTS-HD supports up to eight channels of surround sound with an increased dynamic range, a wider frequency response, and a higher sampling rate than other DTS surround formats.



DOLBY AUDIO-VISUAL CINEMA

DOLBY VISION® | DOLBY ATMOS®

Dolby Vision® decoding is supported to optimize image brightness, extend dynamic range, and provide you with cinema standard high definition image;

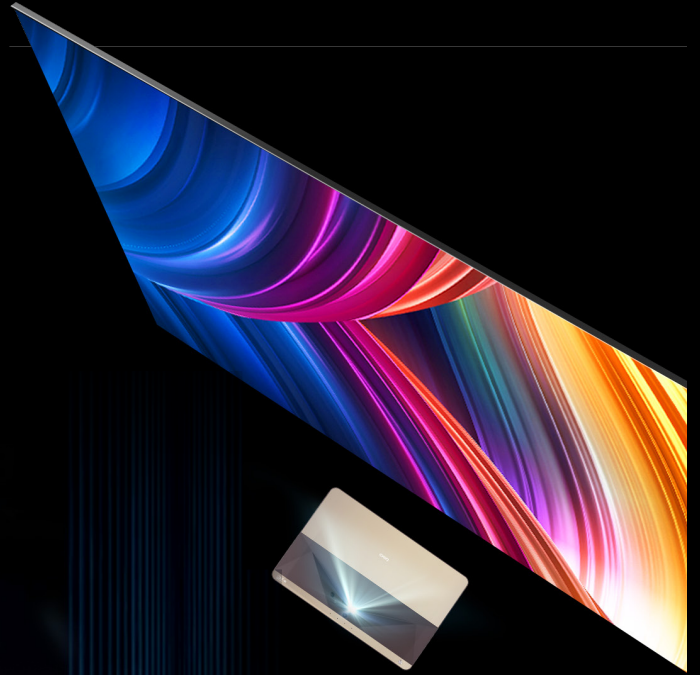
Dolby Atmos® decoding is supported to present dynamic sound effects according to the movie content and show more sound details.



DISCOVERING TRUE COLOUR

1 BILLION COLOURS | HDR10

With the Changhong pure colour laser display technology. Millions of pixels are expertly controlled to restore the true colour of the real world.



ENJOY 3D MOVIES AT HOME

With the full 3D decoding support, you can experience a much more immersive image, right at your home.

SMOOTH PICTURE

MEMC frame interpolation technology enhances the quality and smoothness of the video, games, sports events and other pictures more smooth and coherent with MEMC.



NO MEMC



MEMC

CHiQ B8U Specifications



Image

Display Technology	DLP™
Resolution	4K UHD (3840x2160)
Brightness	2,300 ANSI Lumens
Contrast Ratio (FOFO)	1500:1
Refresh Rate	4K@60Hz
Colour gamut	130% BT.709
Screen size	80"-150", 120" recommended
MEMC	4K and 1080p compatible

Lamp Info

Light source type	Laser
Light source lifespan	25,000 hours

Optical

Throw ratio	0.21:1
Offset	140%
Keystone correction	8 points
Projection Modes	front/back/ceiling front/ceiling back
Focus	electric

Connectivity

Connections	Input
	1 x HDMI 2.1 with CEC
	1 x HDMI 2.1 with eARC and CEC
	2 x USB 2.0 (5V 1A)
	1 x RS-232
	1 x LAN
	Output
	1 x SPDIF
	1 x Coaxial
	1 x 3.5mm Jack
Wireless	IEEE 802.11 a/b/g/n/ac 2.4+5Ghz
	Bluetooth 5.1

Sound and Image Technologies

Image	Dolby Vision
	HDR10
	HLG
	MEMC
Sound	Dolby Atmos
	DTS HD
	Dolby Digital 5.1
	Integrated DSP for automatic sound optimization

Operating System

OS	Android 11 for Android TV
OSD/display language	Chinese
	English
	Thai
	German
	Russian
	French
	Portuguese
	Spanish
	Italian
Voice control	Google Assistant
Chromecast	built-in

General

Noise level (eco/standard/bright)	25.4/28.5/28.7db
Input lag	28ms
3D compatibility	Frame-pack: 1080P
GPU	Mali-G52
RAM	2GB
ROM	32GB
CPU	MT9629
Speaker count	2
Watts per speaker	10W
Conformity Certification	CE/FCC
In the box	AC power cord x 3 (UK/EU/US)
	Remote control
	Basic user manual
	AAA Battery x 2
	CHiQ B8U Projector
Dimensions and Weight	325*151*485mm
	10.9kgs

Other

Power Supply	110v-240v
Power Consumption	220wh (Max)
	145wh (Eco Mode)
	0.39wh (Standby Mode)

CHiQ

Price & Features are subject to change without any prior notice.

Please verify details at your nearest dealer outlet, else visit www.changhong.co.uk.

For sales and service enquiry,
Call Changhong Laser Display UK distributor - D&H General Trading Ltd. +44 1382 250 899
Or e-mail us at: contact@changhong.co.uk

While efforts have been made to provide accurate information, there could be printing errors, which may have crept in. In the event of any discrepancy, the Product Operation Instructions supplied with the product shall be the authentic reference point.